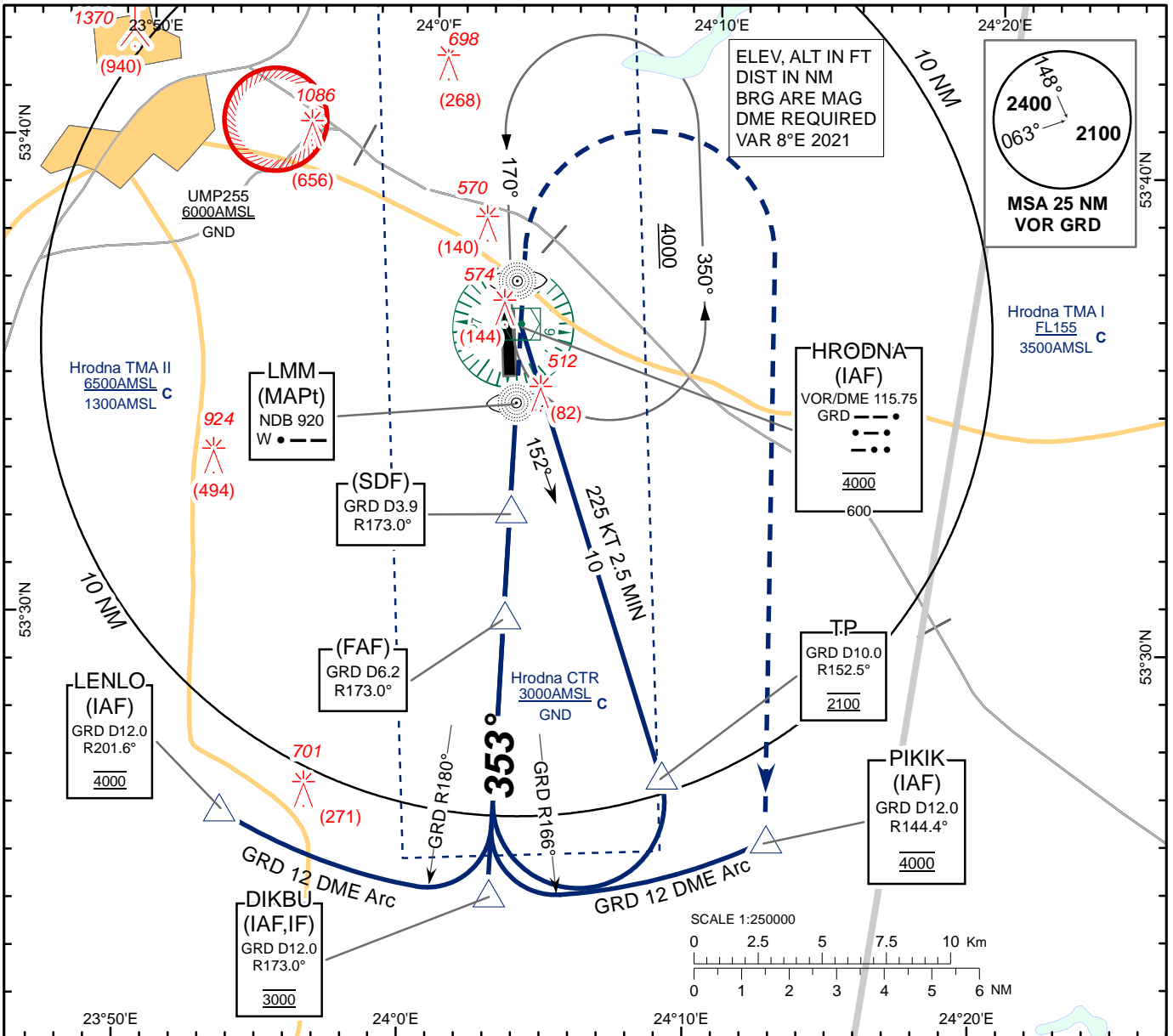


**INSTRUMENT  
APPROACH  
CHART - ICAO**

**AERODROME ELEV 443**  
HEIGHTS RELATED TO  
THR RWY 35 - ELEV 430

TWR	134.500
MET	135.025 EN 126.175 RUS

**HRODNA  
VOR  
RWY 35**

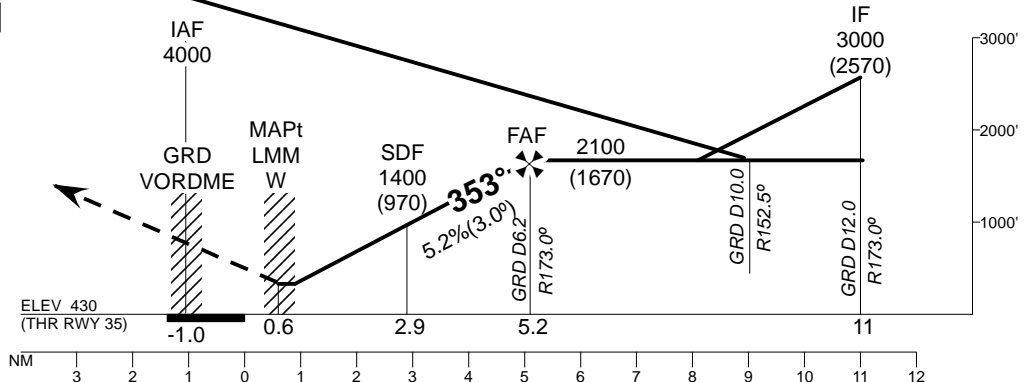


TRANSITION ALTITUDE: 6000

Alt set: hPa (mm on req)  
QNH (QFE on req)

**MISSED APPROACH**

Climb on track 353° to 1100 (670) or above, turn RIGHT to (IAF) PIKIK climbing to 3000 (2570) and follow ATC instructions.



CHANGE: Magnetic VAR.

Aircraft Category	A	B	C	D	GRD	7	6	5	4	3	2	
Straight-in Approach OCA(H)	760(330)				DIST THR	6	5	4	3	2	1	
					ALTITUDE	2100	2050	1730	1420	1100	790	
					HEIGHT	(1670)	(1620)	(1300)	990	(670)	(360)	
Circle - to - land	900(450)	940(500)	1040(600)	1140(690)	Timing not authorized for defining the MAPt							
					GS	Kts	80	100	120	140	160	180
					Desc.Rate(5.2%)	ft/min	420	530	630	740	840	950
					MAPt(4.5 NM)	min:sec	03:22	02:42	02:15	01:56	01:41	01:30

HRODNA  
VOR  
RWY 35

**AERONAUTICAL DATA TABULATION**

<b>VOR approach to RWY35 from GRD VOR/DME, DIKBU, LENLO, PIKIK</b>	
<b>Fix/point</b>	<b>Coordinates</b>
DIKBU (IAF) R 173.0° D12.0 GRD	532428N 0240300E
LENLO (IAF) R 201.6° D12.0 GRD	532602N 0235325E
PIKIK (IAF, IF) R 144.4° D12.0 GRD	532550N 0241240E
(FAF) R 173.0° D6.2 GRD	533018N 0240311E
(SDF) R 173° D3.9 GRD	533232N 0240314E
(TP) R 152.5° D10.0 GRD	532705N 0240855E
GRD VOR/DME (IAF)	533627.5N 0240321.4E
(MAPt) W LMM	533448.3N 0240317.9E
THR RWY 35	533525.69N 0240315.84E